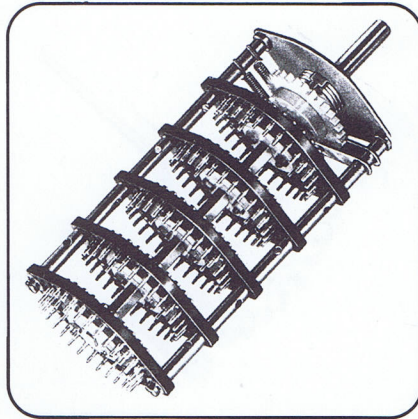




Type 72 Multibank Rotary Switch

The Type 72 Multibank Rotary Switch has been designed to meet BT Specification RC 1416 and provide a high electrical performance allied to a long life of over 20,000 cycles of operation under normal conditions. The switch features a nylon click wheel and is available on centre fixing or by 2 4BA screws. Sealed versions are available on centre fixing only and the unsealed centre fixing type is approved by the Ministry of Technology to style SR3 of DEF 5154.

The switch accommodates from 1 to 6 banks carrying 1, 2, 3 or 4 poles per bank, and incorporates fully adjustable stops at either end of the traverse. Adjustment is by a single locknut. The contacts can either be silver or gold plated nickel silver.



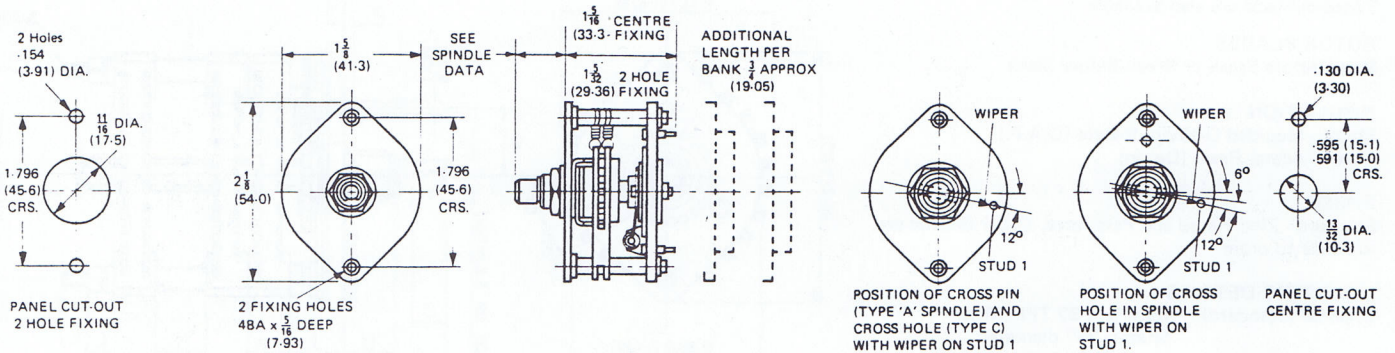
ELECTRICAL SPECIFICATION

Rating	200 Volts dc or ac (rms), 1 Amp
Contact Resistance	0.005 Ohms average
Insulation Resistance	Greater than 500 Megohms at 500 Volts dc
Breaking Current	0.25 Amps
Capacitance	Stud to stud less than 1pf Stud to contact ring less than 2pf Contact ring to contact ring less than 3pf

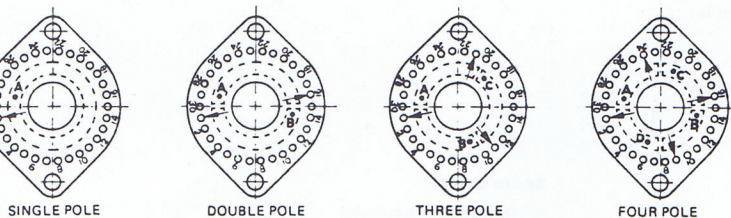
MECHANICAL SPECIFICATION

No. of banks	1 to 6			
No. of poles	1, 2, 3 or 4			
Max. No. of positions (with stops)	1pole	2pole	3pole	4pole
	1 pole	2 pole	3 pole	4 pole
Make before break	29	14	9	6
Break before make	15	7	5	3
Max. No. of positions (fully rotational)	30, break before make 15			
Make before break	Make before break, 12°			
Angle per step	Break before make, 24°			

DIMENSIONS IN INCHES (DIMENSIONS IN MILLIMETRES)



VIEWS ON REAR OF PANELS



SPINDLE DETAILS

