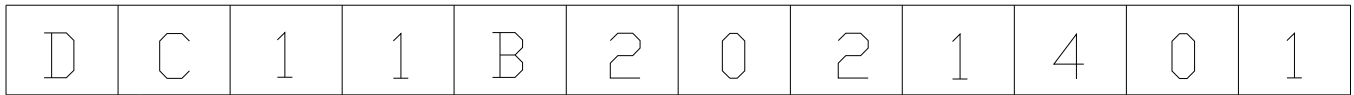


ENCODER

Products Numbering System



ENCODER

Dimension

09	09mm
10	10mm
11	11mm
12	12mm
15	15mm

Pulse

03	03 Pulses
08	08 Pulses
10	10 Pulses
12	12 Pulses
15	15 Pulses
16	16 Pulses
20	20 Pulses
24	24 Pulses

Switch

0	Without
1	0.5 SW
2	1.5 SW

Detent

1	Without
2	With

District

B	Metal Shaft
F	Mouse Encoder
G	Insulated Shaft With Bushing
H	Hollow Shaft
J	Knob Type
K	Insulated Shaft
L	Slim Type

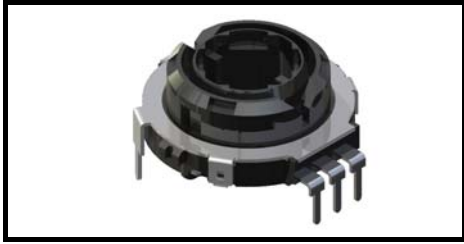
Model

1	Hollow Horizontal type
2	Horizontal type
3	Hollow Vertical type
4	Vertical type
5	SMD type

No.

ENCODER

23mm Size Hollow Shaft Type Encoder



◆ Features

- Provides high-level operation feeling.
- Hollow-center allows combination with other components.

◆ Applications

- Electroic control panel in cars or navigation equipment, professional mixers, and various audio-visual devices.
- Air conditioners, electronic toys, microwave ovens, rice cookers, flat panel TV, remote controllers and various electroics.

◆ Common Specifications

Pulse	Number of detent	Chattering (msec)	Sliding noise (msec)	Insulation resistance	Dielectric strength	Detent torque (gf · cm)	Rotational life (cycle)
10	20	8	3	100V DC 100MΩ MIN.	100V AC 1 min	70±40	50,000

◆ Dimensions

Unit : mm

Model	Dimensions
DC23H10203	<p> P.C.B MOUNTING DETAIL (TOLETANCE ±0.1) *VIEW FORM MOUNTING SIDE P.C.B THICKNESS t=1.6mm </p>