

Type 142 Rotary Switch

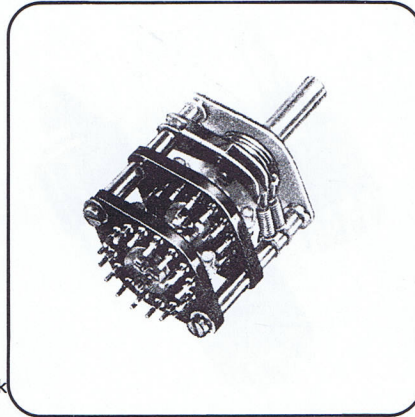


ELECTRICAL SPECIFICATION

Rating	250 Volts dc or ac (rms), 1 Amp
Contact Resistance	0.005 Ohms average
Insulation Resistance	Greater than 500 Megohms at 500 Volts dc
Breaking Current	0.25 Amps
Capacitance	Stud to stud less than 1pf Contact ring to contact ring less than 3pf

MECHANICAL SPECIFICATION

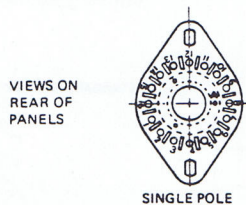
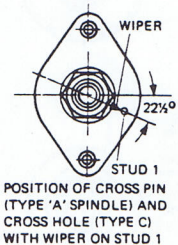
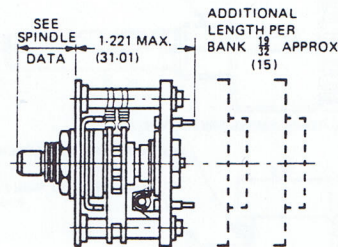
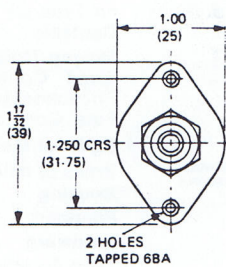
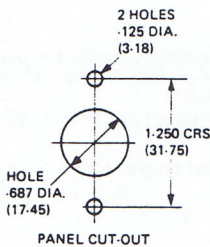
No. of banks	1 to 6
No. of poles	Single or double
Max. No. of positions	16, single pole, make before break 8, single pole, break before make 7, double pole, make before break 4, double pole, break before make 7, double pole, make before break 4, double pole, break before make
Angle per step	Make before break, 22½° Break before make, 45°



The Type 142 is a smaller version which retains all the technical features and quality of the Type 72.

The dimensions of the top plate are only 1" (25.4mm) x 1 17/32" (38.89mm) with 1/4" (31.75mm) between the two fixing centres. It is available with 1 to 6 banks, single or double pole per bank. Maximum number of positions is 16, single pole; and 7, double pole.

DIMENSIONS IN INCHES (DIMENSIONS IN MILLIMETRES)



SPINDLE DETAILS

